

The Laws of Creation

By: Jin Nua

January 2021

The Laws of Creation:

This free paper is linked to Centerpath and Centerlife's various papers, publications, and websites.

The Laws of Creation include the following, attached three papers.

- The Law of Creation (The Center Ordering Principle)
- The Law of Harmony
- The Law of Love

Please visit www.centerlife.center for more details.

Copyright:

The Laws of Creation

By Jin Nua

Published by Centerpath Books Publishing LLC

www.centerlife.center

Copyright Jin Nua 2020-2021

All rights reserved.

Reproduction, retransmission, or redistribution in any form is illegal and strictly forbidden, as is continuous and regular dissemination of any general or specific information. The use of any material included herein must be approved and written permission be gained from the author. Limited quotations or citations may be utilized only if full credit is given to the author. For permission requests, contact the author at jinnua@jinnuablog.com.

All images are Shutterstock and Wikimedia Commons (wikimedia.org) and are in the Public Domain unless noted otherwise. All images are intended for simple illustrative purposes only. Their use does not constituent support of the The Laws of Creation or Centerpath Books Publishing LLC.

Disclaimer:

While this introduction is presented in good faith and for the general advancement of knowledge, in no way can the reader infer any claims or guarantees whatsoever or hold the author or publisher accountable for any information included herein.

The Law of Creation

(The Center Ordering Principle)

*“The visible world is born of the invisible;
The world of forms is born of the formless
...How it comes into existence, is sustained
and once again dissolved is a mystery.
It is fathomless like the sea.”*

-Lao Tzu

The Law of Creation

The universe’s steadfast drive to produce orderly designs is a result of a great creative process rooted in originating and domineering centers.

In a Nutshell

“Nature generates orderly creations through a universally acting, creative process rooted in organizing centers.”

All of nature’s powerhouses—atoms, cells, societies, hurricanes, rivers, colonies of ants, solar systems, galaxies, the entire universe, etc.; each and all find themselves wonderfully organized about a controlling central object. Consider the following.

- Electrons organize about nucleons.
- Metabolic activities swirl around a cell’s core DNA.
- Societies rally about common, central symbols, rituals, and institutions.
- Hurricanes rotate about a low-pressure eye.
- Rivers feed to a single mouth.
- Ants order themselves about a queen.
- Planets revolve about an anchoring star.
- Galaxies circulate about massive black holes.
- The entire universe started at the big bang.

To raise her copiously streaming order, nature employs a simple yet ingenious center-oriented process. The process includes three main steps summarized as follows (see the Jun Nua’s Centerpath Papers or visit Jin’s site at this [link](#) for more details).

1. A seedling-like center spontaneously forms.
2. The center emits a field that shapes its surroundings into a halo-like geometry.
3. The field interacts with items of like makeup in their surroundings, causing them to align toward, gather about, coalesce, move toward, and form about the originating center.

The ultimate outcome of the process is to form a center-oriented, halo shaped geometry about the originating center. It is little surprise that the universe is brimming with spheres, spirals, radials, ellipses, clusters, and branching forms—each’s

center-configured shape reflects the underlying center-oriented process driving it into being.

The Law of Creation (also referred to as the Centering Ordering Principle) is then defined as:

The universe's preponderance to spontaneously form Centers which, in conjunction with the fields emanating from their surface, are endowed with the capability to organize a host of parts in their surroundings into larger, center-oriented whole creations.

The Law of Harmony

"The famous balance of nature is the most extraordinary of all cybernetic systems. Left to itself, it is always self-regulated."

Joseph Wood Krutch

"The divine is there for all of us to see, reflected in the world's beauty, like clouds in the stillness of a lake."

-Jonathan Borges

Introduction to The Law of Harmony

Nature's thriving beauty and balance do not occur by chance—they happen for a reason—and it's because a harmony generating design is built into her very DNA. Incredibly, the very same center-oriented process raising the universe's many orderly creations we just examined (see The Law of Creation) is also responsible for generating the harmony we see streaming throughout the universe.

In a Nutshell

"The universe's creative process spontaneously generates the qualities of symmetry, beauty, balance, holism, and collaboration."

Nature's flourishing beauty and equilibrium are not by chance; they happen for a reason, and it's because a harmony-generating design is built into her DNA.

Nature raises her wonderful spectacle of accord through the very structural and geometric interrelationships generated by nature's Law of Creation. The results of which spontaneously raise the beneficial qualities of symmetry, beauty, balance, holism, and collaboration (and ultimately love as we explore in the Law of Love below).

Halos = Perfection and Holiness



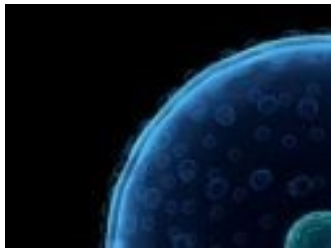
The quickest means to first visualize how centers spontaneously generate beneficial qualities is considering the historical and spiritual significance of halos and spheres. For instance, spheres have long been recognized as the universe's ideal form due to their flawlessness, beauty, and perfection. Of course, these qualities lend themselves to the notions of perfection—a necessary quality to even begin being considered holy, thus the use of halos in the art of mysticism and religion throughout time.

Centers, Symmetry, and Beauty



Artists have long recognized the inherent beauty of spherical shapes, and science has caught up to this fact. Psychologists have found that people considered the most beautiful are those with the most symmetric face. Beauty is indeed synonymous with symmetry and spherical shapes are their most idealized form.

Centers Generate Holism



The three-hundred-and-sixty-degree symmetry generated by center-oriented designs also imparts the qualities of balance and holism to nature's creations. In fact, through the natural equilibrium generated by center-oriented designs; nature finds the organizational compactness, and stability it requires for its creations to sustain and endure themselves.

It's no wonder the primary forms of the universe are spheres, spirals, radials, clusters, and branching systems. Their center-oriented configuration provides the firm foundation from which nature's steadfast creations of atoms, cells, solar systems, galaxies, and societies can survive and, indeed, thrive as they do.

Speaking to the conducive effects of symmetry and its contribution to holistic systems, Daniel Amen has amassed the largest SPECT brain imaging database related to behavior (for reference, SPECT is a nuclear medicine study that looks at the blood flow and activity, it looks at how your brain works). His findings show "that healthy brain scans show full, even, and symmetrical activity. The colors of the scans are not important, it's the shape that matters."

Centers Build Collaborative Relationships



Center-oriented dynamics also generate collaborative-type relationships. Through the simple act of bringing together sets of disassociated 'parts' about a common point, centers naturally cause things to join in larger, cooperative arrangements about a common point and/or purpose. Replace the phrase 'common center' with the words meaning, belief, or symbol and one can see the very bedrocks from which something like a ritual or a society could emerge.

We see this mechanism directly at work in our lives as well. For instance, it's no surprise we enjoy working towards positive, common goals whether at home or in the office. It is because we intuitively recognize such collaborative type practices build stronger and more enduring relationships.

The Law of Harmony

The Law of Harmony is than defined as:

The universe's preponderance to spontaneously generate the beneficial qualities of symmetry, beauty, balance, holism, and collaboration as a result of the geometric and structural interrelationships produced by nature's center-oriented creative process (the Law of Creation).

The Law of Love

"Listen to me when I say that love isn't something we invented, it's observable and powerful, it has to mean something...maybe it means something more, something we can't yet understand. Maybe it's some evidence, some artifact of a higher dimension that we can't consciously perceive. Love is the one thing we're capable of perceiving that transcends dimensions of time and space."

— Dr. Brand, *Interstellar*."

The Binding Power of Love

Like their counterparts in nature, pure and strong centers at the core of human lives generate similarly well-formed, symmetric, and balanced relationships. These type of centers span a host of human qualities including truth, virtue, kindness, compassion, fairness, peacefulness, and love.

In a Nutshell

"The Law of Love describes how pure centers and hearts naturally raise larger symmetric, balanced, and beneficial relationships in human lives."

Of all however, it is love's intrinsic purity that forms the most powerful and meaningful human characteristic trait of all. In fact, as the driving force guiding us to pursue the higher order manifestations of human expressions, love encompasses all others. For instance, it is love that motivates us to be thoughtful, empathetic, accepting, honest, supportive, and act selflessly—i.e., it is love that compels us to be truthful, virtuous, kind, compassionate, fair, and at peace.

Prior to articulating the Law of Love, we will first examine several examples of how pure centers generate symmetric and balanced relationships in human lives to acclimate ourselves to this astonishing set of ideas.

Symmetry in Human Lives (Generated by Pure Centers)

Besides intuitively recognizing that pure centers generate positive and lasting outcomes in human lives, we find tangible evidence of this phenomena by examining the form of the fields radiating from a range of pure-like and constructive human centers.

A Silenced Mind = A Symmetric Mind

We start by examining the structure of the fields surrounding the minds of sages and monks in deep states of meditation. Throughout the millennia sages and monks have described deep meditation as reuniting with, and emanating from a pure and powerful presence at the core of our being. Similar to their counterparts in nature, we should than expect to find an even symmetry formed about this pure-like cognitive center. Let's take a closer look.

A silenced mind in deep meditation doesn't apply prejudice or preconceived notions to what is being observing or considered—it just experiences. All stimuli flows inward

freely and in straight lines having not been redirected, altered, or rerouted by a busy and judgmental mind. An even, undistorted symmetry emerges.

In addition, those who have achieved a silenced mind have described the experience as being fully in the here and now. By not worrying about the future or fretting over the past, what emerges is a near perfect geometry with the past and the future balanced about, and flowing evenly across the 'now' center of their experience.

In essence the smooth and undistorted lines of information flowing undisturbed inward and outwardly about a silent mental core forms a symmetric set of interrelationships about it.

Finding evidence of symmetry about a silenced mind also lends credence to sages and monks when they describe the core of being as pure and powerful. Do such high degrees of purity, energy, and symmetry explain why sages and monks attain amplified levels of clarity, insight, holistic thinking, creativity, and bliss?

Generating Well-Being at the Mouth of the River – The Vagus Nerve

The preceding results find an interesting parallel in science. In an interview in *Scientific America*, scientists led by *Dacher Keltner, director of the Social Interaction Laboratory at the University of California, Berkeley* "have found the vagus nerve, a bundle of nerves that originates in the top of the spinal cord, that when active, is likely to produce feelings of warm expansion in the chest—for example, when we are moved by someone's goodness or when we appreciate a beautiful piece of music. Very new science suggests that it may also be closely connected to receptor networks for oxytocin, a neurotransmitter involved in trust and maternal bonding." Thus, located at the center of our nervous system (i.e., where the brain and spinal cord meet), is a bundle of nerves generating larger sets of feelings associated with beauty, wellbeing, and love!

A Proportionate Family

Interestingly these same set of principles apply to classic family structure. For just like a star and spider forming symmetric creations about them (i.e., a symmetric solar system and bug filled web formed by gravitational and web fields emanating from each center respectively), a mother's incredible organizing skills about and toward the child, forms a stunning and highly meaningful symmetric formation.

In this instance the child forms the center, the mother-figure constitutes the field (i.e., she or he defines the agenda which is tightly aligned to the needs of the child), and the father-figure completes the larger structure through the act of bringing resources back to the home.

You can directly see the good and necessary, symmetry-generating effects of a mother's actions at work when she (or he) interacts with an unfocused or wayward father whose thoughts, actions, and resources aren't aligned to the needs of the family. Mothers naturally recognize this condition and will challenge activities that do not directly contribute to the care of the child.

In essence she will redirect any thoughts and actions that are not pointing inward and toward the child. The reigning female principle of love then engenders a geometry aligned to and about the child ensuring that the child, the family, and ultimately the species are healthy, robust, and persevere.

Truth, Justice, and the Symmetric Way

It's easy to see how the purity of truthfulness and honesty at the core of interactions, generates evenly flowing and symmetric relationships. Take for instance with people are not being truthful. In essence through creating distortions, they break apart the evenly flowing lines of communication and thought that trust engenders. Who hasn't told a lie and felt the effects of this break in symmetry firsthand? When people lose trust in another, they become defensive, put up walls, and reroute future behaviors through the filters created by the offending event. All such effects serving to reroute and distort the flow of experience between two persons.

However, when individuals are truthful to one another, they interact without holding back or restraint. They create pure and evenly flowing lines of interaction and experience. Is the word 'trust' just a way of describing the direct and evenly flowing symmetry emanating from the pure centers of truthfulness and honesty?

The powerful organizing effects of truth and virtue can be gleaned at yet another scale of human association when considering the 'structure' of how people adhere to religious and spiritual traditions. In this instance, the virtue emanating from pure, principled, and truthful ideologies often proves irresistible to the masses and in this case, leading them to completely align their thoughts and actions with their devotion. Of course, such a deep and aligned dedication perfectly describes an evenly flowing symmetry about a pure and powerful center.

A Symmetric Populace

*Governing a large country is like frying a small fish. You spoil it with too much poking.
Center your country in the Tao and evil will have no power.
Not that it isn't there, but you'll be able to step out of its way.
Give evil nothing to oppose and it will disappear by itself.
—Lao Zhu*

As an extension of the previous section, you can also see this mechanism directly at work in the relationship between leaders and the populace. When leaders are corrupt and unprincipled, the masses are similarly misaligned, adversarial, and counterproductive—i.e., they do not believe in, and therefore do not ally to a non-virtuous core. However, if leaders place the guiding principles of truth, fairness, and balance at the core of a society, its inhabitants will gladly align their thoughts, intentions, and commitments. They will act in harmony being happily united to the same well-intentioned goals at their society's center. Society will naturally flourish accordingly.

The Law of Love

Now that we have acclimated ourselves to how pure-like centers naturally form larger, symmetric relationships in our lives, we are now prepared to formulate a theorem for the symmetry-forging power of love.

Consider for a moment the geometry created by unconditional love. When one accepts another without expectation or attempting to change them, signals flow between the two in direct lines not having been rerouted through criticism, calculatedness, or by extracting demands. But through supportive affirmations and body language via listening, patience, encouragement, trust, and accepting that true love engenders; we produce sets of direct and undistorted flows of information and connectivity.

Reinforced by the pure-like qualities of truth, virtue, kindness, compassion, fairness, and peacefulness which love stimulates; a pure heart filled with love forms a larger, similarly arranged, highly meaningful, and symmetrically arranged life about oneself filled with evermore symmetry, beauty, balance, holism, and collaboration.

Love as an immensely pure and powerful center providing what might be the most stunning example of the universe's steadfast drive to forge perfectly arranged, beneficial, symmetric, halo-like forms.

The Law of Love

The Law of Love is then defined as:

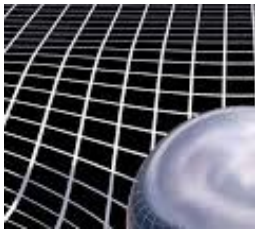
The Law of Love identifies love as the ultimate expression of purity in the realm of human experience. And just like the effects of pure centers in nature, the purity of love at the core of human relations produces symmetric, balanced, holistic, collaborative, mutually beneficial, and enduring relationships in human endeavors.

Friendships, families, corporations, and nations could all benefit from the favorable outcomes pure centers promote. By placing the qualities of integrity, truth, fairness, and love at the core of their principles and mission statements; all such groupings will naturally reap the benefits of symmetric, balanced, holistic, and collaborative relationships that pure centers engender.

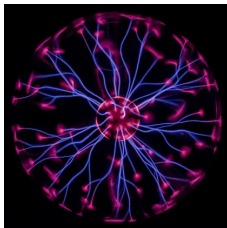
Appendix A - Why Symmetry?

How the universe generates symmetric relationships is through generating centers that are relatively pure and absent of imperfection. In nature, this is largely achieved by ensuring that the starting places of her creations are as homogeneously formed and evenly distributed as possible which, through the correspondingly fields radiating evenly from them, largely guarantees an evenness and balance to the larger wholes forming about them. Much more than their less impure counterparts which would have uneven and non-symmetric fields surrounding them, the wholes generated from pure centers are broader, fuller, and more well-formed.

In essence, the evenly radiating fields from centers shape their surroundings into a well-like shape akin to a bowling ball sitting on a trampoline.



While providing a readymade visual depiction of how fields shape their surroundings, the 2D trampoline analogy oversimplifies the actual 3D reality. In fact, when the trampoline analogy is applied to its true representation in the 3D world in which we live, the outcome is a full circle, halo-like form as depicted in the next image.

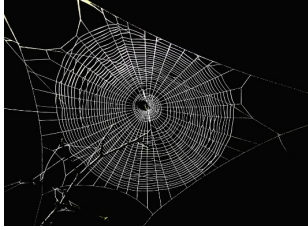


Fields then interact with things in their surroundings, causing them to align inward, affix to, and congeal about their originating center. In the end forming a halo-shaped creation that mimics the halo-shaped, often invisible field underlying it.

You can readily visualize the underlying configuration of fields, and how they structure the 'creation' forming about them, via the following image. Here a magnet's field is exposed by the metal filings positioned about the central magnet.



A spider web forms a field around its center (the spider). The bugs sticking to the web form the larger, extended creation.



Halo forms are also readily visible in the heavens. For instance, planets and suns form spherical halos around the gravitational centers at their core. Halos can also be seen in globular cluster formations as well as the shape of invisible dark matter that encircles galaxies.

